

Hypertherm®

powermax600

Machine torch parts

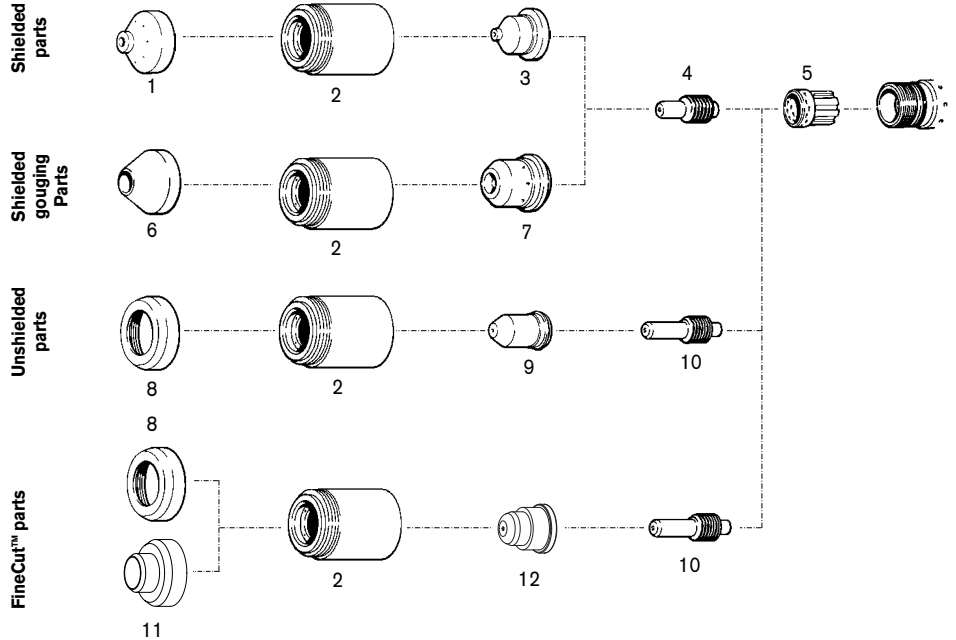
PAC123M consumables



Powermax600



PAC123M torch



	ITEM NUMBER	PART NUMBER	DESCRIPTION	QUANTITY PER PACKAGE
Shielded parts	1	120827	Shield	1
	2	120600	Retaining Cap	1
	3	120826	Nozzle	5
	4	120573	Electrode	5
	5	120576	Swirl Ring	1
Shielded gouging parts	6	120608	Shield, Gouging	1
	2	120600	Retaining Cap	1
	7	120831	Nozzle, Gouging	5
	4	120573	Electrode	5
	5	120576	Swirl Ring	1
Unshielded parts	8	120303	Deflector	1
	2	120600	Retaining Cap	1
	9	120606	Nozzle, Pipe Saddle, 35 Amp	5
	10	120574	Electrode, Extended	5
	5	120576	Swirl Ring	1
FineCut parts	8	120303	Deflector	1
	11	220326	Deflector, CE	1
	2	120600	Retaining Cap	1
	12	220330	Nozzle	5
	10	120574	Electrode	5
	5	120576	Swirl Ring	1

Note: The nozzles and swirl rings shown must be used as a set.

Genuine Hypertherm Consumables

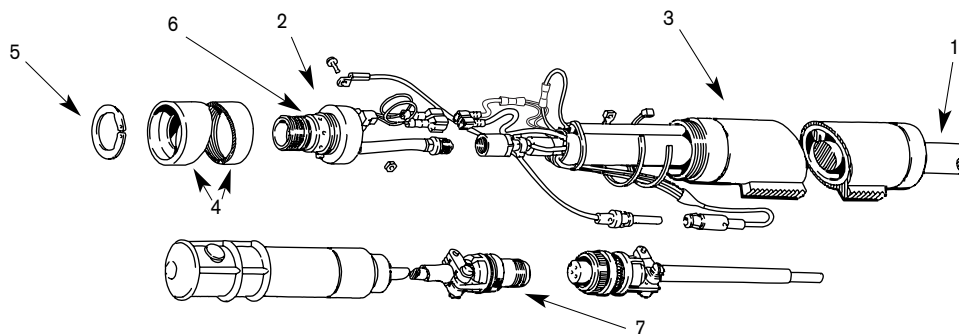
The only way to ensure maximum performance

WARNING

* In countries following CE standards, unshielded consumables may only be used in mechanized torch applications.

Unshielded consumables: maintain torch-to-work distance of approximately 3/16" (4.8 mm).

Powermax600 PAC123M torch assembly



PAC123M torch

ITEM NUMBER	PART NUMBER	DESCRIPTION
	086004 [^]	PAC123M Torch Assembly, with pigtail, without QD* 15' / 4.6 m ++
	086005 [^]	PAC123M Torch Assembly, with pigtail, without QD* 25' / 7.6 m ++
	086006 [^]	PAC123M Torch Assembly, with pigtail, without QD* 50' / 15.2 m ++
	086026 [^]	PAC123M Torch Assembly, with pigtail and QD* 15' / 4.6 m **
	086027 [^]	PAC123M Torch Assembly, with pigtail and QD* 25' / 7.6 m **
	086029 [^]	PAC123M Torch Assembly, with pigtail and QD* 50' / 15.2 m **
1	128374	Torch Lead, with pigtail, without QD* 15' / 4.6 m ++
1	128375	Torch Lead, with pigtail, without QD* 25' / 7.6 m ++
1	128376	Torch Lead, with pigtail, without QD* 50' / 15.2 m ++
1	128572	Torch Lead, with pigtail and QD* 15' / 4.6 m **
1	128573	Torch Lead, with pigtail and QD* 25' / 7.6 m **
1	128574	Torch Lead, with pigtail and QD* 50' / 15.2 m **
2	120583	Torch Main Body with Switch
3	020620	Torch Position Sleeve
4	120613	Torch Sleeve
5	027599	Snap Ring
6	044016	O-Ring, Buna - N 90 Duro
7	028714	On/Off Pendant, 25' / 7.6 m
7	128061	On/Off Pendant, 50' / 15.2 m
7	128062	On/Off Pendant, 75' / 22.9 m

[^] Assembly includes consumables

* QD = Quick Disconnect

++ Only for use with 230 V and 400 V systems.

** Only for use with 208 - 240 V and 480 V systems.

Hypertherm, Powermax, G3 Series, FineCut and PAC are trademarks of Hypertherm, Inc. and may be registered in the United States and/or other countries.

Hypertherm®

The world leader in
plasma cutting technology™

www.hypertherm.com

Hypertherm, Inc. USA 603-643-3441 Tel 603-643-5352 Fax consumable.info@hypertherm.com

Hypertherm Automation, LLC USA 603-298-7970 Tel 603-298-7977 Fax info@hyperthermautomation.com

Hypertherm Plasmatechnik, GmbH Deutschland 49 6181 58 2100 Tel 49 6181 58 2134 Fax
HTDeutschland.info@hypertherm.com

Hypertherm (S) Pte Ltd. Singapore 65 6 841 2489 Tel 65 6 841 2490 Fax
HTSingapore.info@hypertherm.com

Hypertherm (Shanghai) Consulting Co., Ltd China 86-21-5835-5362 /3 Tel 86-21-5835 5220 Fax
HTChina.info@hypertherm.com

Hypertherm UK, Ltd. England 44 1928 579 074 Tel 44 1928 579 604 Fax HTUK.info@hypertherm.com

France 00 800 3324 9737 Tél 00 800 4973 7329 Fax HTFrance.info@hypertherm.com

Hypertherm S.r.l. Italia 39 02 725 46 312 Tel 39 02 725 46 400 Fax HTItalia.info@hypertherm.com

Hypertherm Europe B.V. Nederland 31 165 59 69 07 Tel 31 165 59 69 01 Fax
HTEurope.info@hypertherm.com

Japan 81 05 5975 7387 Tel 81 05 5975 7376 Fax HTJapan.info@hypertherm.com

Hypertherm Brasil Ltda. 55 21 2278 6162 Tel 55 21 2578 0947 Fax HTBrasil.info@hypertherm.com